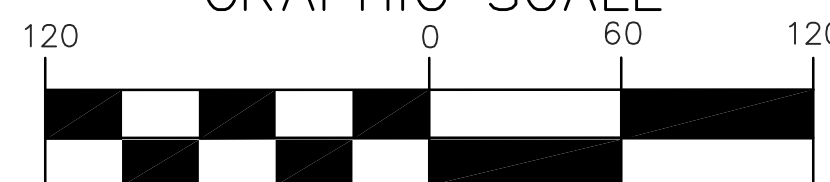
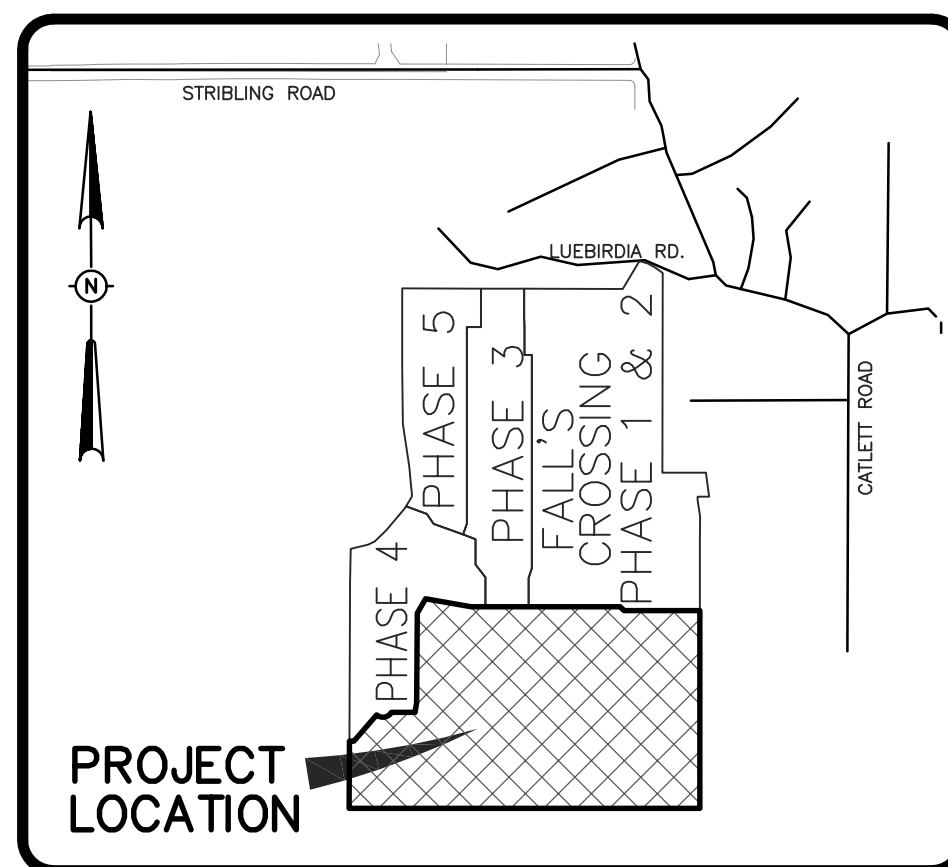


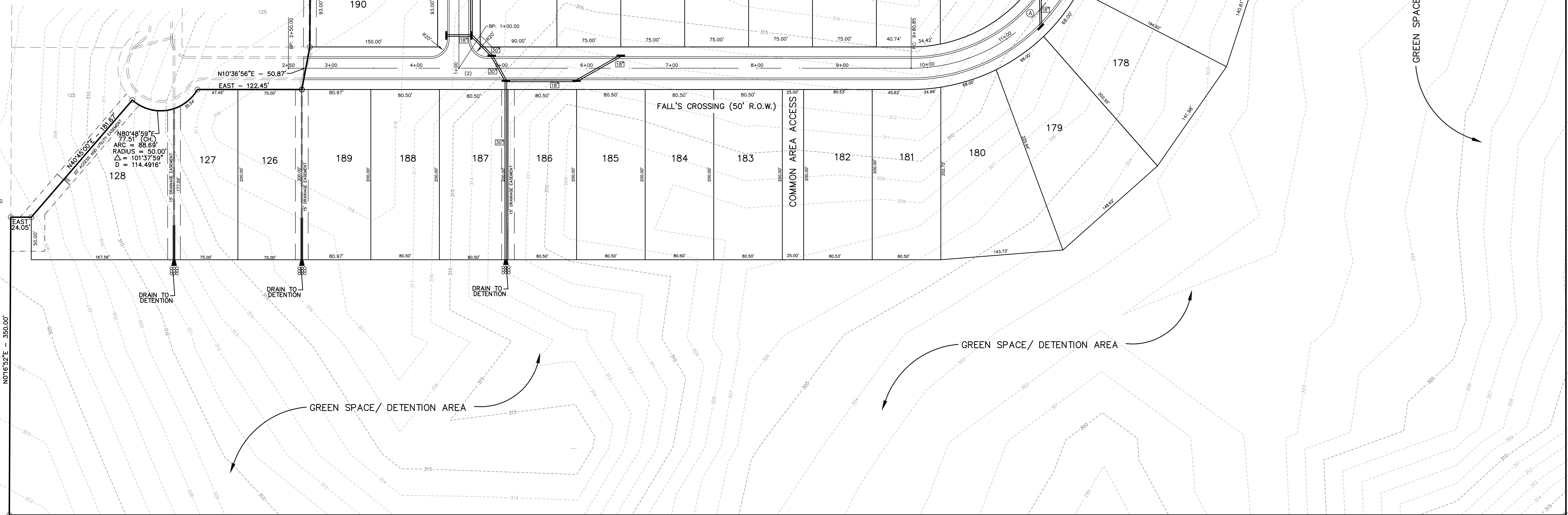
GRAPHIC SCALE



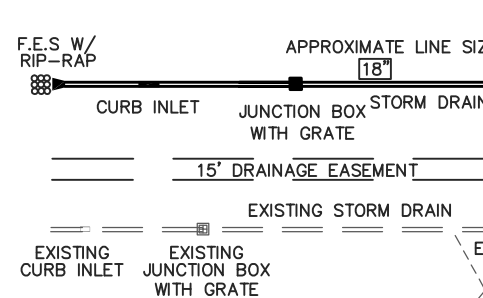
( IN FEET )  
1" = 60'



VICINITY MAP  
SCALE 1"=1000'



UTILITY LEGEND



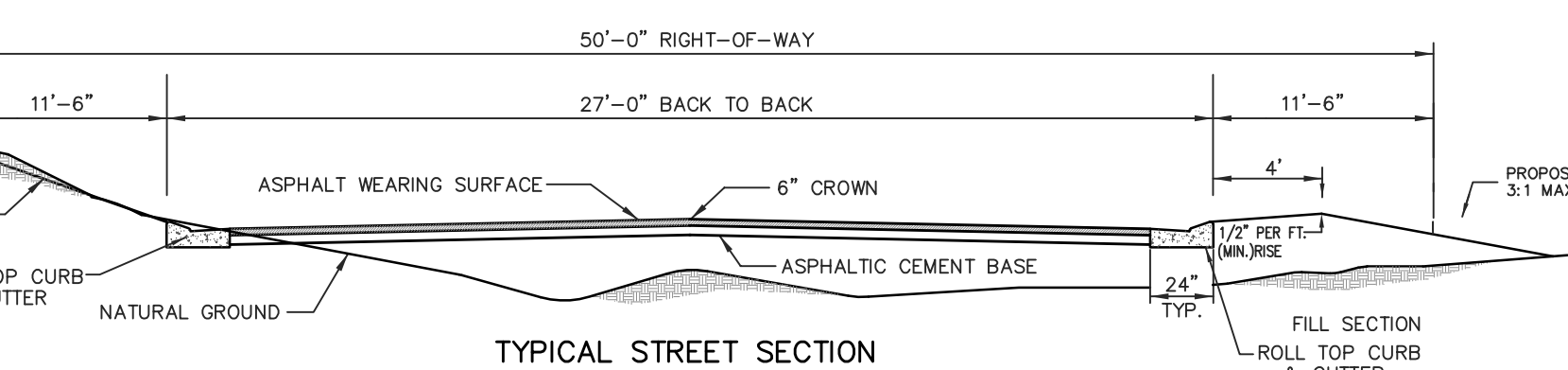
CENTERLINE INTERSECTIONS

- (1) STA. 18+89.31 FALL'S CROSSING= STA.11+40.33 MULBERRY DRIVE
- (2) STA. 4+50.11 FALL'S CROSSING= STA.1+00 MULBERRY DRIVE

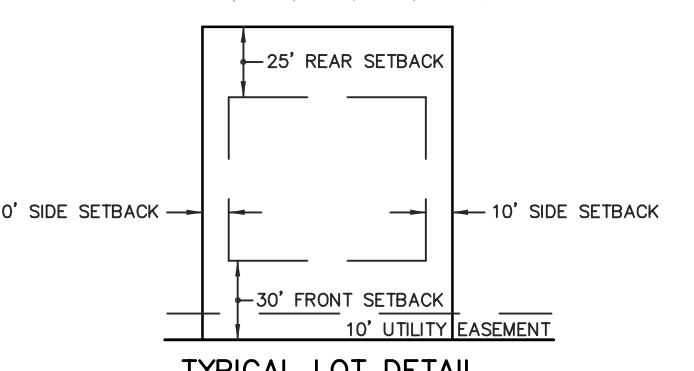
CENTERLINE CURVE DATA

Table with 2 columns of curve data including stationing, bearings, distances, radii, and lengths.

DEVELOPER  
SSR DEVELOPMENT, LLC  
P.O. BOX 100  
MADISON, MS 39130-0100  
601-856-5510



TYPICAL STREET SECTION



TYPICAL LOT DETAIL

MATHEMATICAL CLOSURE:  
ERROR OF CLOSURE: 0.0122  
PERIMETER: 5,658.98  
PRECISION: 0.000002156  
GREATER THAN 1/100,000

BENCHMARK

COTTON PICKER SPINDLE IN GUTTER - ELEVATION: 312.15  
DATUM: NAVD88

NOTES:

- 1. DIMENSIONS ALONG CURVES ARE CHORD DISTANCES.
- 2. AREA = 39.169 ACRES (MORE OR LESS)
- 3. CONCRETE MONUMENTS WILL BE PLACED AT ALL CORNERS OF THE SUBDIVISION POST-CONSTRUCTION.
- 4. THIS SUBDIVISION LIES WITHIN THE LIMITS ESTABLISHED FOR ZONE "X" (NO SHADING) ACCORDING TO FIRM NUMBER 28089C0395 F, EFFECTIVE MARCH 17, 2010.
- 5. SANITARY SEWER COLLECTION SYSTEM AND WATER DISTRIBUTION SYSTEM ARE TO BE DESIGNED BY BEAR CREEK WATER ASSOCIATION.
- 6. TYPE V GEOTEXTILE FABRIC REQUIRED UNDER ALL RIP-RAP.
- 7. THE CONTOURS SHOWN ARE BASED ON AERIAL TOPOGRAPHY.
- 8. ALL COMMON AREAS, DRAINAGE EASEMENTS AND GREEN SPACE SHALL BE MAINTAINED BY THE HOMEOWNERS ASSOCIATION.
- 9. DRAINAGE EASEMENTS AND PIPES TO BE MAINTAINED BY HOMEOWNERS ASSOCIATION OR ADJACENT PROPERTY OWNERS.
- 10. DATE OF SURVEY: AUGUST 16, 2012
- 11. TYPICAL ROADWAY SECTION IS 27 FEET BACK TO BACK OF CURB.
- 12. ALL RADII SHOWN ARE TO THE BACK OF CURB.

H D LANG AND ASSOCIATES, INC.  
POST OFFICE BOX 16085  
JACKSON, MISSISSIPPI 39236  
601-362-4886

PROJECT  
PRELIMINARY LAND DEVELOPMENT PLAN  
OF  
FALL'S CROSSING, PHASE 6

LOCATION  
SITUATED IN THE NW 1/4 OF SECTION 19  
TOWNSHIP 8 NORTH, RANGE 2 EAST  
MADISON COUNTY, MISSISSIPPI

Table with columns: DATE, REVISION, BY, DRAWN BY: JBH, DATE: 11-10-16, PROJECT NO.: 05-054